

# COOPERS BREWERY FOUNDATION

*2013 Annual Report*



F O U N D A T I O N 

*Brewing support for the community.*



**HeartKids SA** Family Education day for families with children living with childhood heart disease



# CHAIR REPORT

Since the *Foundation's* inception in *2006*, we have distributed more than \$2 million to support over 150 *charitable projects*.

It is my pleasure to report on the Coopers Brewery Foundation activities for the 2012–2013 year.

This year has seen the Foundation distribute over \$2 million in charitable funds since our inaugural donation in May 2007. Credit and thanks for this achievement must be given to our patrons, shareholders, suppliers and friends who made this possible through their extraordinary generosity.

Over the past financial year, the Foundation distributed and pledged \$345,000 to 20 Australian charitable projects bringing the overall distribution since inception to \$2,082,701.

Tours continued to be highly popular and over \$42,000 was raised during the year, \$6,000 more than last year. Again thanks go to Frank Akers for his work in conducting the tours and promoting the Foundation to the general public.

Our recycling efforts under the guidance of Frank Perrotta and our engineering team have continued to generate significant amounts, in excess of \$67,000, which was \$5,000 more than last year.

Much of the Company's scrap metal, bottles, paper and cardboard in the past was disposed of at a cost, but now generates income for the Foundation.

Patron Glenn Cooper and former Chairman of the Foundation, Tim Cooper were engaged by industry groups to give talks, which raised over \$18,000 during the year, around \$4,000 more than last year.

The generosity of participants and suppliers was again evident at this year's Foundation golf day, raising \$80,149 for the Archbishop's Appeal, in aid of Anglicare's Generate program, which aims to break the cycle of intergenerational unemployment in the northern suburbs. This result was \$8,000 more than the previous golf day and is not possible without the hard work and dedication of the organising committee run by Two Do Events and ably supported by Ginta Orchard and Coopers representatives Penny Johnson and Leanne Gelly.

Our executive officer Ginta Orchard and I have recently completed the annual corporate governance review as part of the Foundation's internal audit. I want to acknowledge the work and advice Ginta has provided which has been invaluable, especially at a time when the legislation surrounding not for profit organisations has changed significantly.



**Camp Quality SA** Family Camp for families whose kids have recently been diagnosed with cancer





**Foodbank SA**  
 Establishing a Community Foodbank in Bowden.  
*In collaboration with 600 welfare agencies, Foodbank distributes throughout SA 1.5 million kgs of food a year, the equivalent of 2.9 million meals*

I wish to thank the Board of Governors for their continued support and commitment in ensuring the Foundation's mission, values, and principles are upheld. I also appreciate and thank Leanne Gelly for the many hours she has contributed to the Foundation in a number of ways and congratulate her on her recent appointment as a Governor.

In June, the Board of Coopers Brewery elected to make a \$2 million donation to the Foundation for the establishment of a corpus, whereby further distributions can be made, as well as grow and manage the Fund into a lasting legacy. This will also create a vehicle whereby bequests can be made and retained as capital, generating ongoing income.

With their help, we reached the significant milestone of \$2 million donated to charities since the Foundation's inception, and will continue our mission to make a difference, brewing support for the community.

*M A Cooper*

**Melanie Cooper**  
 Chair of the Coopers Brewery Foundation

## The *Governors* of the *Foundation* act in an honorary capacity.

### GOVERNORS



From left:  
 Haydn Duffield  
 Leanne Gelly  
 Tim Cooper AM  
 Rex Keily AM  
 Melanie Cooper  
 Matthew Cooper

### PATRONS



Bill Cooper OAM



Glenn Cooper AM

### EXECUTIVE OFFICER



Ginta Orchard



**The Prince Charles Hospital Foundation QLD**  
 Research ventilation for neuromuscular disease in improving the quality of life of neuromuscular disease sufferers and their carers.



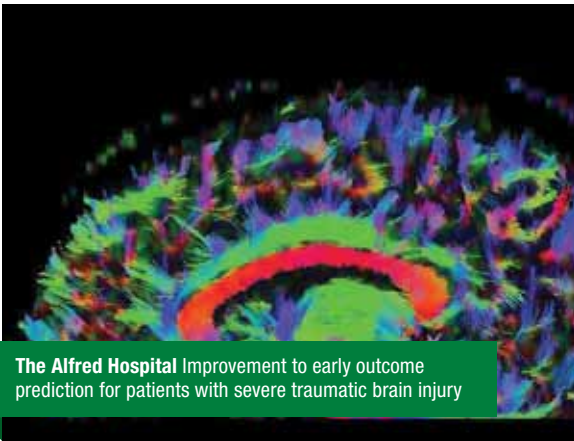
**Junction Australia** Supporting vulnerable infants in high risk families



**Hear and Say Centre for Deaf Children**  
Verbal program for deaf children in Queensland

# BENEFICIARIES

These organisations are *remarkable* and *inspirational* in what they offer and manage to achieve, often with very limited means. The Foundation distributed and pledged \$345,000 to 20 projects.



**The Alfred Hospital** Improvement to early outcome prediction for patients with severe traumatic brain injury



**St John's Youth Services SA** Next Step Program establishing sustainable housing for homeless youth



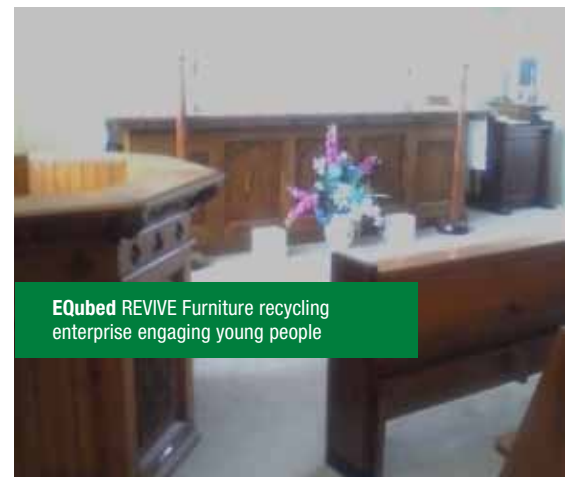
**The Leukaemia Foundation of Australia SA** Building a patient treatment village



**Day of Difference**  
Paediatric Critical Injury Research Program



**Youngcare NSW** Building apartments for young people with high care needs



**EQubed** REVIVE Furniture recycling enterprise engaging young people



**St Ann's Special School**  
Development of an outdoor learning area

Selection of the past year's *beneficiaries* was based on the principles of the *Foundation's Mission Statement* and the merits of the projects submitted.



**Autism SA** Playground shade sails for respite houses

<b>Camp Quality SA / Family Camp</b>	<b>\$7,500.00</b>
<b>Day of Difference / Family Support Program</b>	<b>\$10,000.00</b>
<b>Hear and Say Centre for Deaf Children / Little Explorers Auditory Verbal Program LEAP</b>	<b>\$15,000.00</b>
<b>St Ann's Special School / Outdoor Learning Area</b>	<b>\$10,000.00</b>
<b>St John's Youth Services / Next Step Program</b>	<b>\$12,500.00</b>
<b>Time for Kids / Volunteer host family weekends</b>	<b>\$20,000.00</b>

<b>Anglicare SA Generate Program / Working with 15 to 21 year olds, educating and empowering youth for employment</b>	<b>\$80,149.00</b>
<b>HeartKids SA / Family Education</b>	<b>\$10,000.00</b>



**Community Life Batemans Bay** Christian based outreach for people affected by drug and alcohol addictions

<b>Autism SA / Shade for fun and fitness</b>	<b>\$12,500.00</b>
<b>Mary Potter Foundation / Calvary Cancer Ward Upgrade</b>	<b>\$20,000.00</b>
<b>The Centre for Cerebral Palsy WA / Building a real home</b>	<b>\$20,000.00</b>
<b>The Leukaemia Foundation of Australia / Patient Village</b>	<b>\$20,900.00</b>
<b>The Prince Charles Hospital Foundation / Research ventilation for neuromuscular disease</b>	<b>\$9,627.00</b>
<b>The Alfred Hospital / Traumatic Brain Injury Research</b>	<b>\$20,000.00</b>
<b>Youngcare / Apartments Sydney</b>	<b>\$20,000.00</b>

<b>Community Life Batemans Bay / New Beginning</b>	<b>\$15,000.00</b>
<b>EQubed / Furniture recycling enterprise for young people</b>	<b>\$12,000.00</b>
<b>Foodbank SA / Part Fund Christmas Hamper Program</b>	<b>\$12,500.00</b>
<b>Foodbank SA / Establishment of the Bowden facility</b>	<b>\$10,000.00</b>
<b>Junction Australia / Point of Engagement</b>	<b>\$7,500.00</b>



**Mary Potter Foundation**  
St Helen's Cancer ward upgrade

- CHILDREN & YOUTH
- MEDICAL RESEARCH & HEALTH CARE
- FAMILY & COMMUNITY SUPPORT
- WELFARE & AGED CARE

# Friends of the *Foundation*

You are invited to join us in our *mission* by making a financial contribution and becoming a *Friend of the Foundation*. 100% of your donation will be distributed to worthy *Australian charities*.

In appreciation, we offer the following recognition based on donors' cumulative giving:

## Gold \$10,000 +

Foundation Pin, Annual Report acknowledgement, Honorary Life Membership which includes lasting acknowledgement on the Foundation Honour Board.

## Red \$5,000 to \$9,999

Foundation Pin, Foundation Pen and Annual Report acknowledgement.

## Green \$50 to \$4,999

Foundation Pen and Annual Report acknowledgement.

## Bequest or donation given in memory \$500 +

Annual Report acknowledgement, lasting acknowledgement on the Foundation Honour Board.

## Time for Kids

Volunteer hosted weekends for disadvantaged children. *"Jenny is the only person in the world who listens to me about my mum and dad. Thank you Time for Kids for finding Jenny for me. I don't feel as alone as I did before I met Jenny."*



We would like to acknowledge our friends who have generously contributed this year based on donors accumulative giving.

### GOLD DONORS \$10,000+

ALLIANZ AUSTRALIA	COOPER, BILL & JO
COOPER, JAMES & CHRISTINA	COOPER, MATTHEW & STEFANY
COOPER, TIM & BARBARA	COOPERS BREWERY
LIQUOR INDUSTRY GOLF CLUB OF SA INC	PREMIUM BEVERAGES
REYNOLDS, RAY & MARY	WIN TELEVISION

### RED DONORS \$5,000 to \$9,999

AHRENS	BOTTEN, LISA & RUSSELL
COOPER, MELANIE	COOPER, VERITY
CORPORATE CONVERSATION	DOSER FREIGHT FORWARDING
EDWARDS, BRIAN	HOLTON, GRAHAM
McCARTHY, BARBARA	MEADWESTVACO
PEARCE, CAMERON	PROSSER, JOSEPHINE
SHEARER, MICHAEL & JO	THIRSTY CAMEL

### GREEN DONORS \$50 TO \$4,999

AKERS, FRANK	ALFA LAVAL
BATE, ROSALIE	BERGIN, VANESSA
BEST, JO	BRAUND, NICK
BRYANT, TRISTAN	COAD, ROSALIE
COOPER, DALE	COOPER, PHILIP
FANTO, CARLO	FILSELL, CLAIRE
FRASER, LEANNE & GRANTLEY	GELLY, LEANNE
GLYNN, ANTHONY	JAKSCH, BETTINA
KENNEDY, JACK	MATTHEWS, ALLISON & BRIAN
MAZZAGATTI, ROCKY	McCONNELL, GREG
MIDOLO, LOUISE	MOTT MACDONALD
ORCHARD, GINTA & DAVID	PERROTTA, FRANK
PIPER, BOB	PIPER, GEOFF & TRISH
RENDELL, JEAN	ROSE & SHAMROCK INN
SIEBELS, PETER	SCARCE, JOHN
STERENBERG, NICK	TOMTOM
VAN RUTH, JOHN	ZAFRY, MARION

# Summary of *Financial Statements*

Statement of Comprehensive Income	2013 \$	2012 \$
<b>Revenue</b>		
Revenue from ordinary activities	2,361,857	422,415
<b>Total Revenue</b>	<b>2,361,857</b>	<b>422,415</b>
<b>Expenses</b>		
Expenses from ordinary activities	-	-
<b>Total Expenses</b>	<b>-</b>	<b>-</b>
Net Surplus from Ordinary Activities	2,361,857	422,415
Donations Made	325,176	429,000
Surplus / (deficit) for the period	2,036,681	(6,585)
Other Comprehensive Income	-	-
<b>Total Comprehensive Income / (loss) for the Period</b>	<b>2,036,681</b>	<b>(6,585)</b>

Statement of Changes in Equity	2013 \$	2012 \$
<b>Retained Earnings</b>		
Balance at Beginning of Period	20,536	27,121
Net Surplus / (deficit) from ordinary activities	2,036,681	(6,585)
<b>Balance at End of period</b>	<b>2,057,217</b>	<b>20,536</b>

Statement of Financial Position	2013 \$	2012 \$
<b>Current Assets</b>		
Cash and cash equivalents	2,056,698	36,177
Trade and other receivables	519	4,359
<b>Total Current Assets</b>	<b>2,057,217</b>	<b>40,536</b>
<b>Total Assets</b>	<b>2,057,217</b>	<b>40,536</b>
<b>Current Liabilities</b>		
Donations Payable	-	20,000
<b>Total Current Liabilities</b>	<b>-</b>	<b>20,000</b>
<b>Total Liabilities</b>	<b>-</b>	<b>20,000</b>
<b>Net Assets</b>	<b>2,057,217</b>	<b>20,536</b>
<b>Equity</b>		
Accumulated Funds	2,057,217	20,536
<b>Total Equity</b>	<b>2,057,217</b>	<b>20,536</b>

Revenue from Ordinary Activities	2013 \$	2012 \$
Donations	2,133,767	156,440
Fundraising Events	23,673	80,817
Golf Day	75,149	72,925
Recycling	67,054	60,904
Speaking Engagements	18,325	14,250
Tours	42,201	33,773
Interest	1,688	3,306
<b>Total</b>	<b>2,361,857</b>	<b>422,415</b>

During the year, the Foundation received a donation of \$2,000,000 from Coopers Brewery Limited which is included within revenue from donations. This sizeable donation is to be applied by the Foundation for the establishment of a Perpetual Fund, such that the income from a corpus, which is intended to grow, will ensure a strong financial future for the Foundation.

Cash Flows from Ordinary Activities	2013 \$	2012 \$
<b>Cash receipts</b>		
Donations and charitable support	2,364,426	417,426
<b>Net Cash receipts</b>	<b>2,364,426</b>	<b>417,426</b>

Cash Payments	2013 \$	2012 \$
Donations made	345,176	424,000
<b>Net cash payments</b>	<b>345,176</b>	<b>424,000</b>
<b>Net Cash (Paid) from Ordinary Activities</b>	<b>2,019,250</b>	<b>(6,574)</b>

Cash Flows from Investing Activities	2013 \$	2012 \$
Interest Received	1,271	3,567
<b>Net cash from investing activities</b>	<b>1,271</b>	<b>3,567</b>
<b>Net increase / (decrease) in cash</b>	<b>2,020,521</b>	<b>(3,007)</b>
Cash and cash equivalents at 1 July	36,177	39,184
<b>Cash and cash equivalents at 30 June</b>	<b>2,056,698</b>	<b>36,177</b>

## The Centre for Cerebral Palsy WA

Building a home for people living with Cerebral Palsy. *"I just want a place I can call home. To have my own room, where I can sleep peacefully and call my own."* Cassia





## 5th ANNUAL *Foundation Golf Day*

The generosity of participants and suppliers was again abundant at this year's *Foundation Golf Day* held at Kooyonga Golf Club on *Friday the 3rd May*. It was another immensely popular, enjoyable, and successful event raising \$80,149 for the Anglicare Generate program.

The program focuses on reaching families who experience intergenerational unemployment. Generate helps young people secure paid employment by developing their numeracy and literacy skills, providing access to computers and phones, clothing for interviews and public transport tickets, together with the encouragement and support to continue through the program. Generate works with the whole family and prepares them for the impact paid employment will have on their family life, something many of us take for granted. There are currently 88 young people involved in the program.

This was another very successful result and can only be achieved through the wonderful support and generosity from the individuals and companies represented, whether by participation, in-kind support or donations. We extend our gratitude again to everyone who contributed to the day.

### GOLF DAY SUPPORTERS & SPONSORS

ADELAIDE CASINO	ADELAIDE CONVENTION CENTRE
ADELAIDE FESTIVAL CENTRE	ALLIANZ
AMCOR	ANZ
CHRIS JARMER @ AIR BISTRO & BAR	ANGELAKIS BROTHERS
ESPRESSO ESSENTIAL	ECOLAB
EVENTS CORP SIGNAGE	FINSBURY GREEN
GORDON PICKARD	HAIGHS
INTERCONTINENTAL	KPMG
KWP!	MACQUARIE PRIVATE WEALTH
MARK WIGGINS	OSMOFLO
PHIL HOFFMANN TRAVEL	PREMIUM BEVERAGES
PRICE SCREEN PROCESS	PSD
QANTAS	RM WILLIAMS
SCHWEPPEES	SKY CITY DARWIN
STAMFORD GRAND	TOPLINE PROMOTIONS
VALE SIGNS	VILI'S
YALUMBA	



### PRO BONO SUPPORTERS

**Annual Report Designers** On Creative  
**Annual Report Printers** Finsbury Green  
**Stationery Printers** Cruickshank Rapid

### FOUNDATION HEAD OFFICE

**Postal:** PO Box 46, Regency Park SA 5942  
**Head Office:** 461 South Road, Regency Park SA 5010  
**T:** 1300 664 344 **F:** 08 8440 1818  
**E:** foundation@coopers.com.au  
**W:** www.coopers.com.au